

CUP MANDATORY BODY RELATED VEHICLE SAFETY PARTS/ASSEMBLIES

PART/ASSEMBLY	REPLACE ORIGINAL (Y/N)	NOTES
A-Post Flaps	Y	Must be functional at all times per the rule book.
Roof Flaps	Y	Must be functional at all times per the rule book.
Diffuser Flaps *	Y	Must be functional at all times per the rule book.
Hood Flaps	Y	Must be functional at all times per the rule book or may be removed.
Door Foam	Y	Must be adequately retained by original door panel.
Deck Lid	N	
Spoiler	Y	
Roof Air Deflectors and Extensions	Y	
Rear Window Air Deflectors	Y	
Deck Lid Air Deflector	Y	
Roof Hatch	Y	Must be functional at all times per the rule book.
Right Side Window	Y	
Rear Bumper Cover	Y	
Front and Rear Bumpers and Assemblies	Y	
Front and Rear Windows	Y	
Tailpipe Assembly	Y	Must be functional at all times per the rule book.

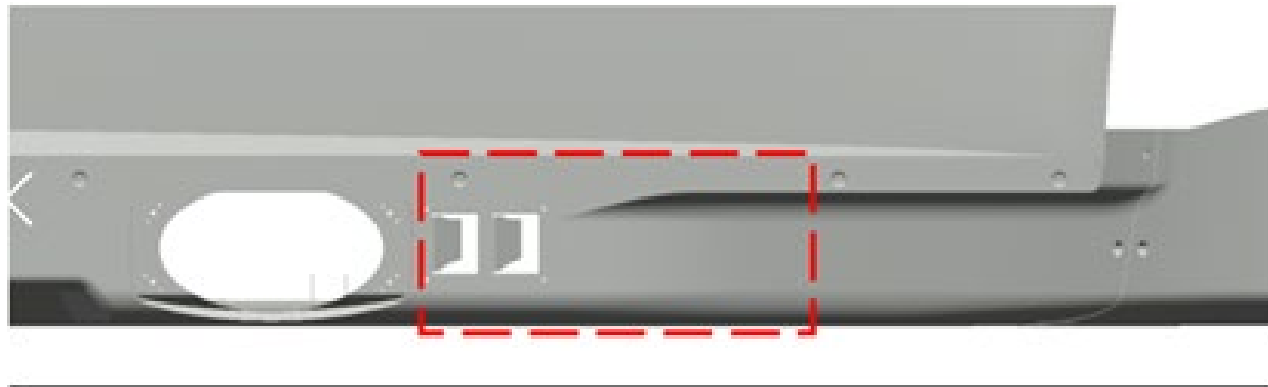
* Only at Events requiring Diffuser Flaps

Y – Yes-Original part/assembly can be replaced with new parts/assemblies and multiple times, if required

N – No-Original part/assembly cannot be replaced with new parts/assemblies or part/assembly which that has been lost due to crash activity

TAILPIPE ASSEMBLY

- Tailpipe assemblies must be installed/attached at all times per the rule book, 14.7.2.1 and all exhaust parts may be replaced if damaged.
- The approximate area illustrated below may be cut out for tailpipe repairs.
- Bearbond/tape is not permitted to fill the void from the cut-out area or used to refasten original body and louver area that was removed.
- The original body and louver area that was removed may be refastened in its original position and held in place by metal tabs, screws, and or rivets.



REAR BUMPER COVER

- Bumper cover must be used as manufactured (mounting flanges may not be removed).
- A maximum of 2 (1 per side) brackets/tabs may attach the rear bumper cover to quarter panels.
- The maximum bracket/tab size is 16.0" x 6.0" x 1/8".
- Brackets/tabs must be metal and must not be connected to each other.
- Brackets/tabs that enhance vehicle performance will not be permitted.

DIFFUSER FLAP

- The diffuser flap must be functional or remain open at all times.
- If the detent latch does not successfully open and close, the diffuser flap must remain open at all times.
- If the diffuser flap is pulled through the hardware at the hinge, the diffuser flap must be fastened to the diffuser at the leading edge and remain open. See picture below.
- If the diffuser flap assembly must be replaced (original is missing), the flap must remain deployed, and the tethers must remain attached.

